

# 708 NW 30th Street

Oklahoma City

Darla Knight  
CRRC-Tulsa  
918.557.5966  
[darla@crcc.us](mailto:darla@crcc.us)

Mike Buhl  
CRRC-OKC  
405.360.5966  
[buhl@crcc.us](mailto:buhl@crcc.us)

Araine Cash  
CRRC-Corporate  
405.274.2491  
[araine@crcc.us](mailto:araine@crcc.us)



The apartment community is located at 708 NW 30th Street. The property is just South of NW 30th Street between Shartel Avenue and Lee Avenue. This property is less than 1.5 miles of Oklahoma City University, a major University located in the heart of Oklahoma City. Oklahoma City University currently has over 3,700 students enrolled. The property has nearby access to I-35 and I-44 , two main arteries passing through Oklahoma City. The property is located in the historic Paseo District in Oklahoma City



**COMMERCIAL REALTY RESOURCES COMPANY**  
MULTIFAMILY INVESTMENT SERVICES

Kansas

Oklahoma

Arkansas

# 708 NW 30th Street

Oklahoma City

1927 Construction  
8-Units

Kansas

Oklahoma

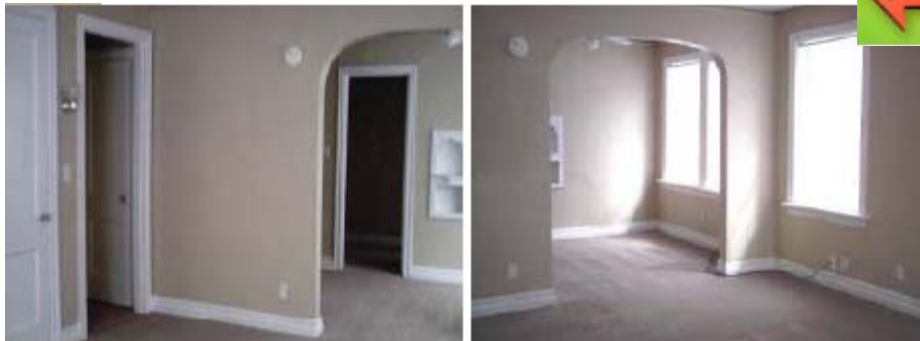
Arkansas

No Units	#Bdms/Bth	Sq.Ft.	Total Sq.Ft.	Market Rent	Rent/Sq. Ft.	Gross/Mo.	Gross/Yr.
8	1Bed/1Bth	600	4,800	\$425	\$0.68	\$3,400	\$40,800
		600	4,800	\$425	\$0.58	\$3,400	\$40,800



## INVESTMENT SUMMARY

8-Units  
 4,800 Net Rentable Sq. Ft.  
 Price: \$180,000  
 Price/Unit: \$22,500  
 Price/Sq. Ft.: \$37.50  
 Terms: Buyer to obtain new financing.



COMMERCIAL REALTY RESOURCES COMPANY  
 MULTIFAMILY INVESTMENT SERVICES